



CLIMATE SERVICES

*The Future of Climate Services,
European Research and Innovation
Outlook*

International Conference on Climate Science and Services, Exeter, 7th October 2016



FOR MORE INFORMATION

<https://goo.gl/RTsVaz>



@CLIMARIEU

#ClimateServices

Diogo de Gusmão-Sørensen

European Commission
Directorate-General for Research and Innovation
Climate Action & Earth Observation

Research and
Innovation



drive an aggressive global mitigation agenda.

policy makers
communities
regions
businesses
and individuals
plan ahead and avoid
economic loss while
ensuring well-being.

enhance adaptation to
the impacts of climate
change.



CLIMATE SERVICES

The transformation of
climate-related data and other
relevant information into **products,
tools and services** that support
adaptation, mitigation and
disaster risk management.



Boost society's resilience and
capacity to adapt to climate
change by addressing existing or
emerging risks.

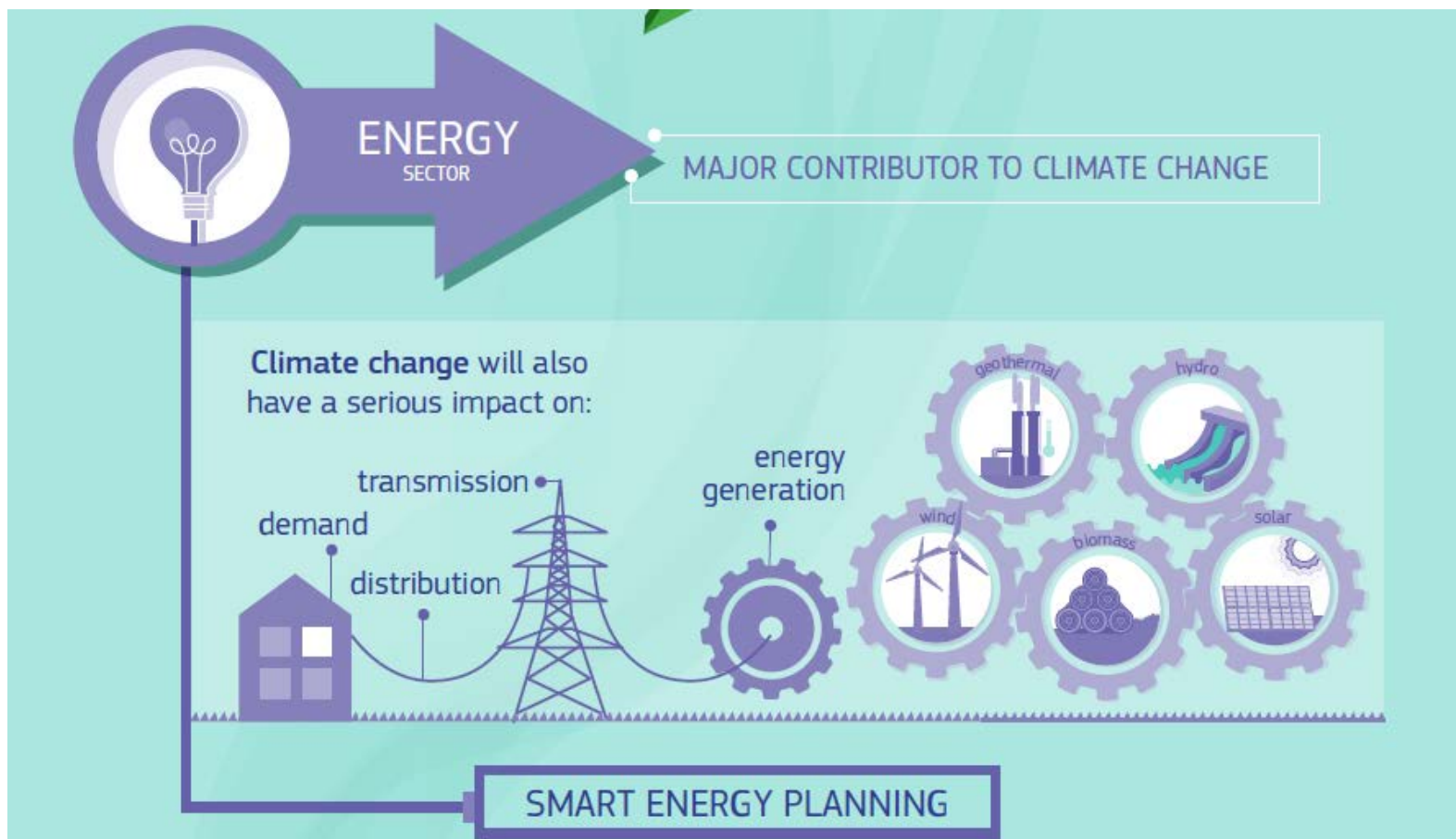


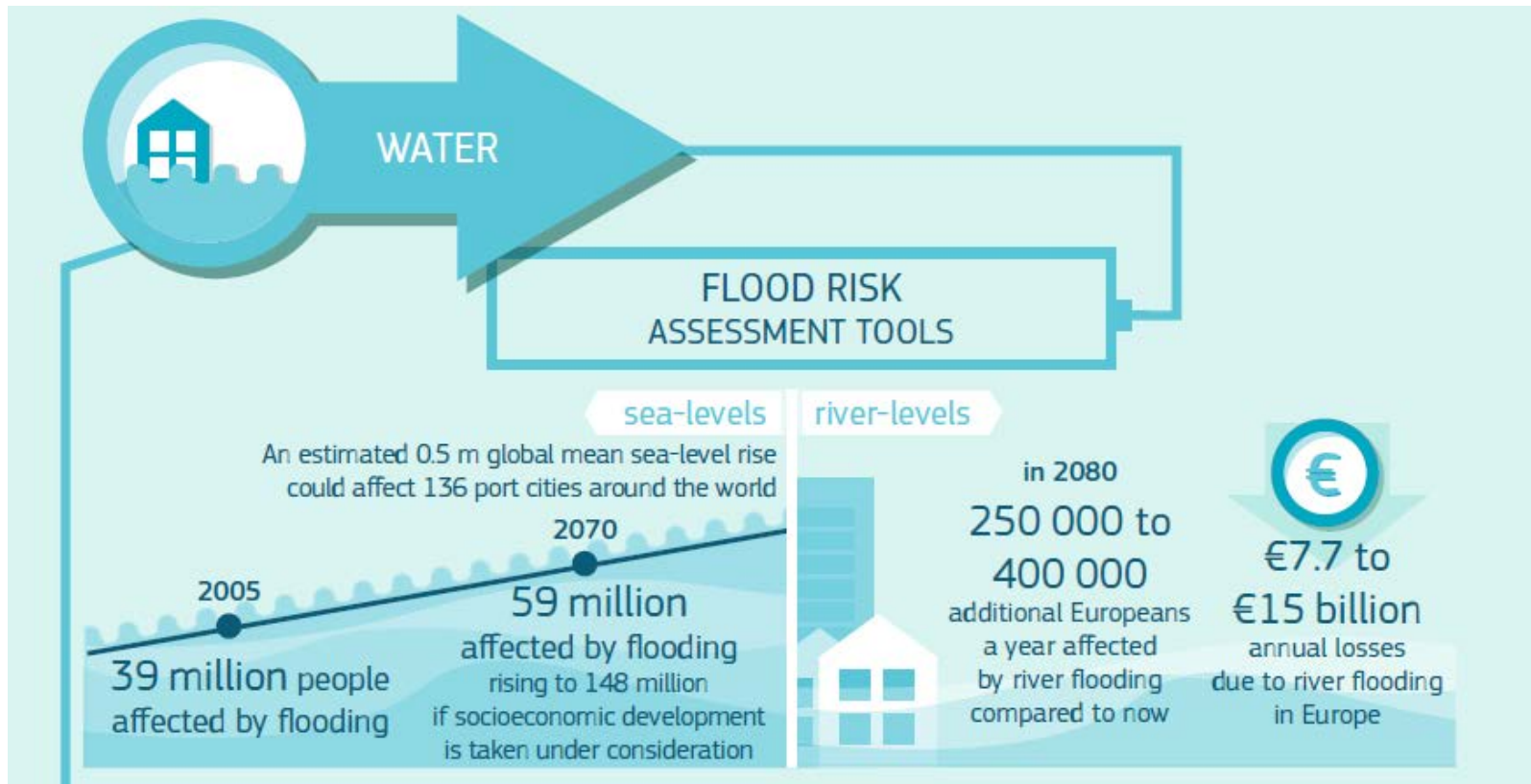
ENERGY

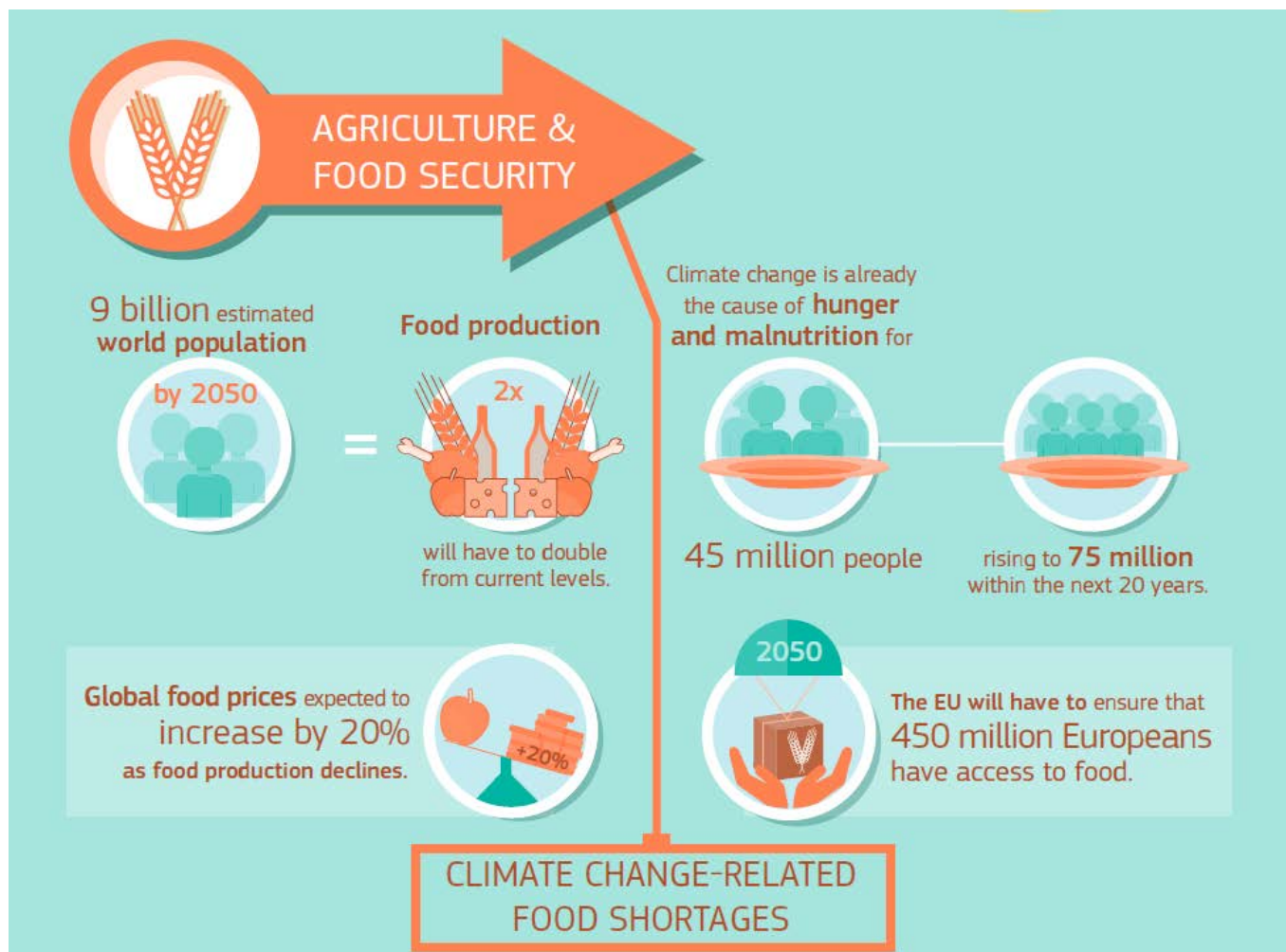
WATER

AGRICULTURE & FOOD SECURITY

HEALTH











THE EU'S RESPONSE TO CLIMATE CHANGE MUST BE BASED ON EVIDENCE

The EU is taking actions to limit the global average temperature rise to 2° C above pre-industrial levels whilst pursuing efforts to limit it to 1.5° C

Rapid and effective decisions and actions are needed to decarbonise the economy and help society adapt to unavoidable changes and impacts.



The EU's research and innovation investments aim to drive the emergence of a Climate Services market by establishing conditions that:



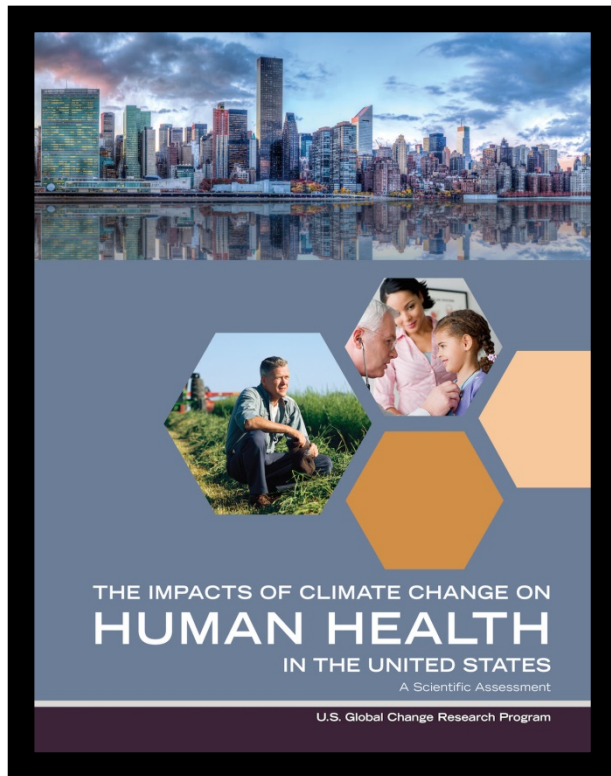
generate economic value from available climate data, models and ongoing climate research



make sure scientific research provides solutions to the challenges facing society

This will make action to mitigate and adapt to climate change more cost-effective, in turn making the European economy more competitive.

Emerging evidence – e.g. *Health*



Some key findings:

- *Rising atmospheric CO₂ lowers nutritional value of food*
- *Extreme heat increases risks for people with behavioural disorders*
- *Vulnerability varies over time but is place-specific*
- *Changes in mosquito-borne disease dynamics*
- *Increased CO₂ levels promote heavier and longer exposure to aeroallergens*
- *Increases in temperature-related deaths*
- *We are becoming slightly more tolerant to extreme heat*



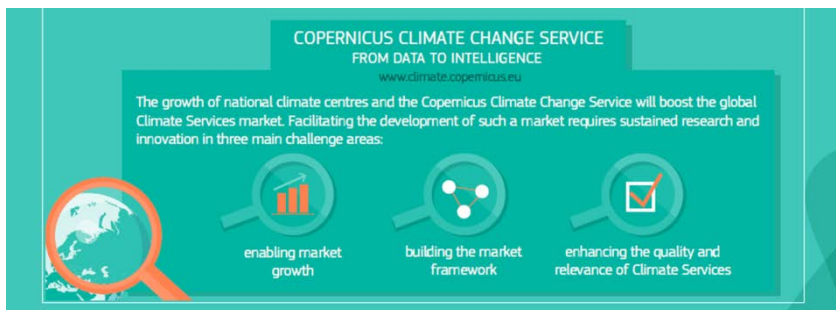
Copernicus

Europe's eyes on Earth

Climate Change:
Who said too much information
leads to misinformation?



Future R&I topics will increasingly seek to exploit Copernicus' wealth of data





CO-DESIGN AND MUTUAL LEARNING

New partnerships will be at the core of developing Climate Services.
We must collaborate, design and implement innovative solutions together.

GET INVOLVED





CLIMATE SERVICES

European research and innovation

Make use of the best available science and data to help everyone better adapt to the Earth's changing climate.

THANK YOU



FOR MORE INFORMATION

<https://goo.gl/RTsVaz>



@CLIMARIEU
#ClimateServices

Diogo de Gusmão-Sørensen

European Commission
Directorate-General for Research and Innovation
Climate Action & Earth Observation

Research and
Innovation